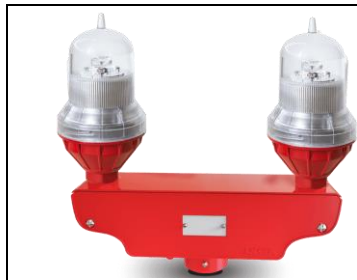


LS810D Dual Low Intensity aviation obstruction light



Products description and application

Applying to tower(power transportation, telecom, GSM), smokestacks(power plant, coking plant, chemical plant), high buildings, bridge, harbor machinery, construction machinery, wind turbine etc for aircraft warning.

Suitable for obstacles which below 45m.

Features

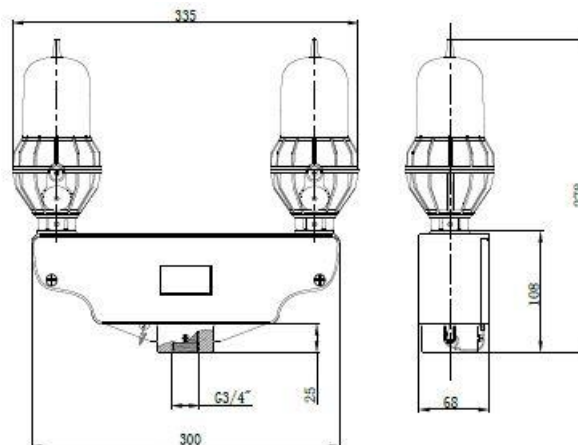
- Aluminum alloy die casting shell, electrostatic powder spraying on surface, vibration resistance, corrosion resistance.
- Red appearance(yellow color is optional).
- Use UV resistant, shock resistant PC lampshade.
- Compliant to ICAO (Annex No. 14) Low intensity standard and FAA-L810 type.
- Based on LED technology, low power consumption, and high efficiency.
- Dual light operating separately(when main light is in failure, another light start operating, this function can be customized).
- Photocell control function(can be customized).photocell level 500lux.
- G3/4"pipe is available for installation, easy for mounting

General Specifications

Operative standard	CAAC	MH6012-2015	Aviation obstruction light
	ICAO	ICAO Annex 14 Volume I 6th Edition	Airport design and operation
	FAA	Advisory Circular 150/5345-43GH	Specification for Obstruction Lighting Equipment

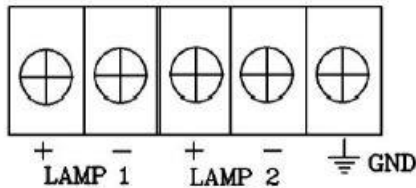
Electrical parameters		Mechanical structure parameter	
Input voltage	DC48V	Operation temperature	-40°C ~ +55°C
Power consumption	4W	Operation humidity	10%~95%RH
Lightning protect	IEC61000-4-5 L- L 2kV IEC61000-4-5 L- G 4kV	Storage temperature	-40°C ~ +70°C
Electrostatic discharge	IEC61000-4-2 contact discharge 8kV	IP Rate	IP65
		Reference weight	2.3 kg
Optical parameters			
Intensity	32.5cd		
Vertical degree	≥10°	Horizontal degree	360°
Color	Red	Operation mode	Steady burning(flashing can be customized)

Mounting dimensions (unit mm)



Installation and Operation

- ☐ Please check the supply voltage does comply with rated voltage of the lamp.
- ☐ Screw the lamp on G3/4' pipe of mounting bracket, which should be fixed on a smooth surface with enough mechanical strength. Or you can select our mounting bracket: PJ024, PJ005. Note that installation is fixed and reliable, so as not to fall.
- ☐ If the lamp is with photocell, please do not put photocell direct to nearby light. Meanwhile ensure that the photocell is not obstructed by nearby object.
- ☐ Open the connection box and connect the power wire, signal wire according to marking. Then remount the connection box.



- ☐ Switch on the power after check up. The light begins to work.

Notice

- ☐ The part of material of products is PC(like lamp cover and lamp shell), so it cannot direct or indirect touch the organic solvent, such as industrial alcohol, banana oil, isotropic alcohol, carbon tetra-chloride, cyclone and so on, otherwise, the product will be corrosion.
- ☐ Please do not open any components except professional serviceman.
- ☐ `When the lamp works, temperature rising is normal phenomenon.