

Heliport TLOF Inset Perimeter Lights CM-HT12/CQ

Product Description

To ensure the safety of helicopter pilots, it is necessary to emit Green/Blue/Yellow light in all directions during low visibility periods, indicating the perimeter of the heliport take-off and landing area as well as the safe landing zone.

Application

The Helipad inset lights emit a constant Green/Yellow/Blue glow, serving as an omnidirectional signal during low visibility or nighttime conditions. Their purpose is to provide precise landing locations for helicopters. These lights are controlled by a heliport control cabinet.

Description

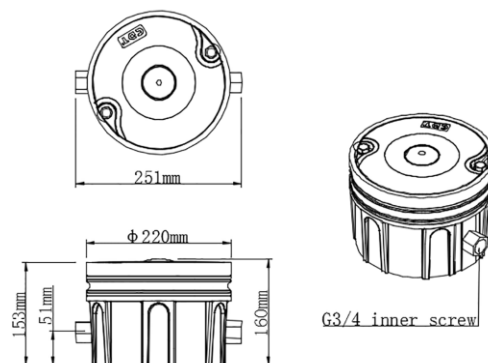
- Adopt toughened optical glass with high strength, good abrasion resistance, strong impact resistance, and light transmittance of more than 95%.
- The upper cover of the light is made of high-quality aluminum alloy with good mechanical properties, strong bearing capacity, and impact resistance.
- The light body is made of corrosion-resistant aluminum and the surface is anodized. All fasteners are made of stainless steel, which can be used in various environments.
- The light surface is smooth and no acute angles to ensure the safety of the heliport tires.
- The light source LED adopts the imported international advanced long-life, low power consumption, and high-efficiency chip package (lifetime exceeds 100,000 hours).
- Strict LED color management to ensure the consistency of light color.
- The power factor is greater than 0.9, which can minimize the interference to the power grid.
- The power line of the light is equipped with an anti-surge device (10KV / 5KA surge protection), which can be applied to harsh climate environments.
- The dust-proof and waterproof grade can reach IP68, and the power supply adopts glue sealing technology.



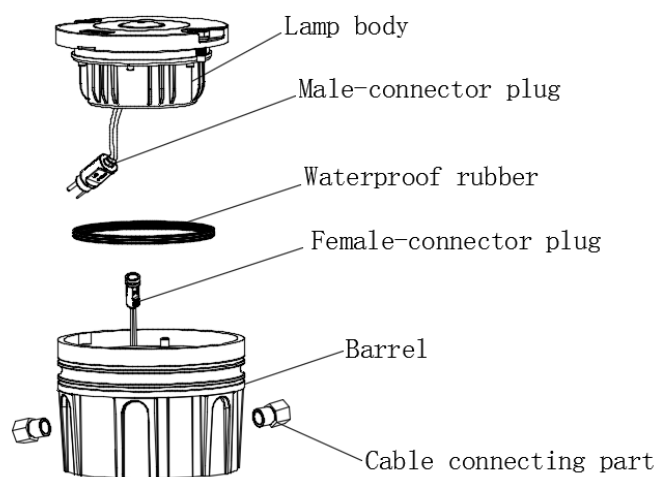
Specification:

Item	Parameter
Model	CM-HT12/D
Operating voltage	AC220V, DC48V, (Other available)
Power consumption	≤7W
Altitude	≤2500m
Light Intensity	30cd
Light Source	LED
Light Source Lifespan	100,000,000times.
Emitting Color	Green/Blue/Yellow
Ingress Protection	IP68
Operating temperature	-40°C~55°C
Wind Load	80m/s
Weight	7.3 kg
Overall Dimension (mm)	220mmx156mm
Installation Dimension (mm)	220mmx156mm
Quality Assurance	ISO9001:2015

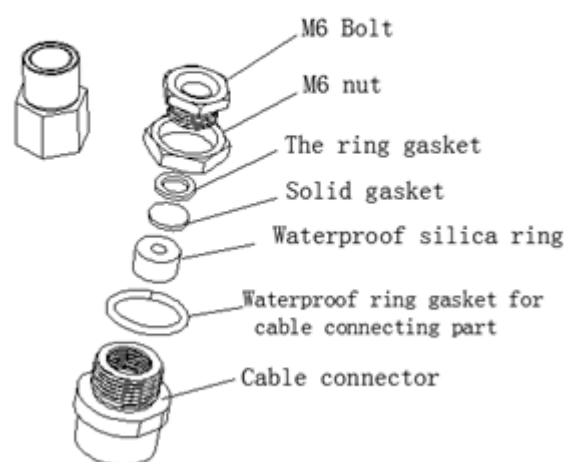
Dimmension:



Installation Notes



Cable connecting part



Step 1



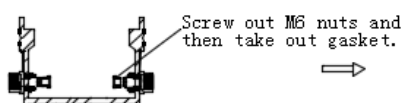
Open the pack and take out the light.

Step 2

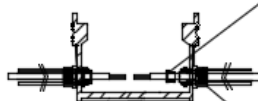


Screw out these 2 pcs M10 nuts, and use the screwdriver (diameter less than $\Phi 8\text{mm}$) to take out the lamp body, make sure the lamp body and the barrel are separate.

Step 3



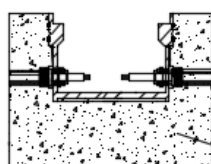
Screw out M6 nuts and then take out gasket.



Let the cable pass through cable connecting part and waterproof silica ring, and then cover the gasket, finally make the M6 nuts must be tightened. Noted that make sure the M6 nuts are tightened enough, or the water will be fallen inside through the cable.

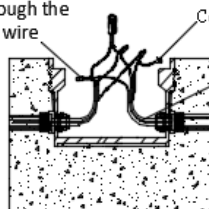
There is G3/4 screwed joint which can be screwed and tightened with cable connecting part, and please make sure it will be waterproof.

Step 4



Built-in the barrel

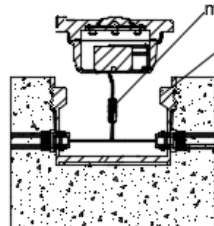
Tighten enough the closed-end wire



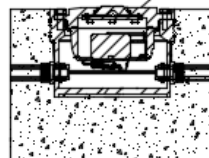
Connecting the ground wire

Connect lamp wire with cable together, please use the waterproof electrical tape to let them be tightened and waterproof enough.

Step 5



Clean up the barrel



Connect with male plug and female plug together and make sure they are tightened enough.

Put the lamp body into the barrel, screw the M10 nuts to be tightened.