


RCLS-08-LED

In-pavement LED runway centerline light - Airsafe



COMPLIANCE:

- ICAO Annex.14 Vol.1
- FAA AC 150/5345-46
- IEC61827
- EASA: CS-ADR-DSN
- STANAG 3316
- AENA PPT-013_03-12



BOARDING TIME

BOARDING PASS

NAME OF PASSANGER

FROM:

TO:

DATE

GATE 23

FLIGHT GAES2020

SEAT 21B

GATE CLOSSES 30 MINUTES BEFORE DEPARTURE

BOARDING PASS

Uses

In-pavement LED runway centerline lights for airports CAT I, II y III, according to ICAO, Figures A2-6 & A2-7.

Features

- 8" external diameter, with upper and lower cover manufactured on high strength forged aluminum, and only 6mm of profile over pavement.
- Stainless steel hardware.
- Uni-directional and bi-directional configuration.
- Surface treatment to prevent the wear and increase the corrosion resistance, which makes it especially resistant to dust and water.
- Smooth surface without sharpened edges to avoid damages at the aircraft tyres.
- Regulation according to FAA EB67E equivalent to a halogen lamp.
- Integrated surge protection.
- Efficient control of LEDs operating temperature, increasing the light life and avoid color change.
- High features optical design.
- Compatible with existing circuits of visual aids.

Specifications

- Power: 2.8A ~ 6.6A, according to FAA EB67D.
- Average life: minimum 60.000h at maximum brightness and 100.000h in a normal operating conditions.
- Colors: Red and White
- Consumption: 24VA (bi-direccional) - 18VA (uni-direccional) ; FP >0,95
- Index Protection: IP68.

RCLS-08-LED | In-pavement LED runway centerline light - Airsafe

		Order Code
Type	RCLS-08 = 8" runway centerline light	RCLS-08 - LED - XX - 1P - X
Light source	LED	
Beam color	CC = Both windows: white CR = Window 1: white / Window 2: red CB = Window 1: white / Window 2: in blank RB = Window 1: red / Window 2: in blank	
Plug	1P = 1 plug	
Optional functions	M = Single lamp fault detection function A = Artic kit	

Installation

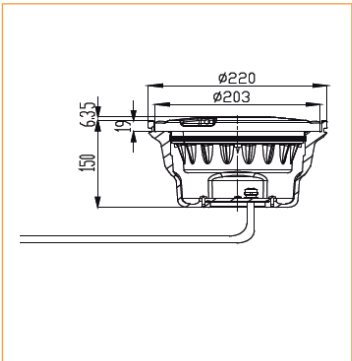


Figure 1
On 8" shallow base

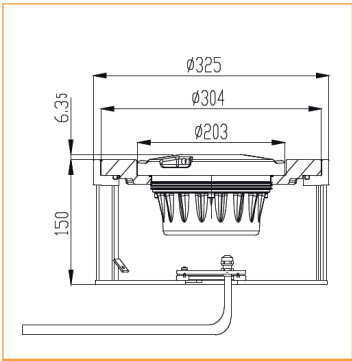


Figure 2
On 12" shallow base with 12" - 8" adapter ring

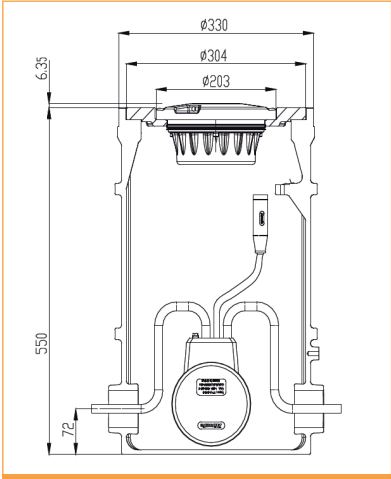
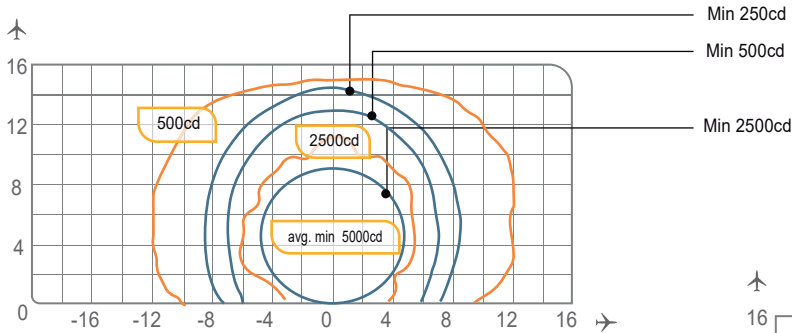


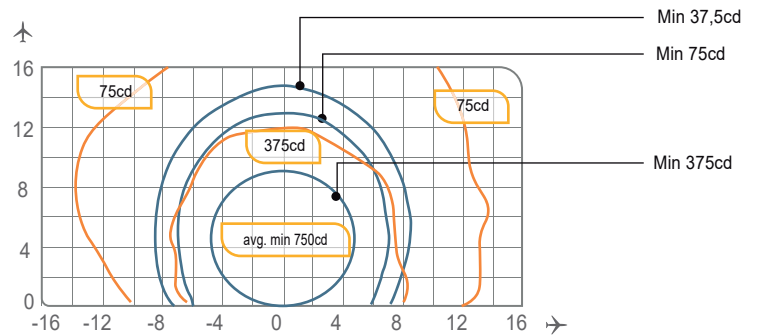
Figure 3
On 12" deep base with 12" - 8" adapter ring

RCLS-08-LED | In-pavement LED runway centerline light - Airsafe

Photometry



RCLS-08-LED, ICAO Fig. A2-7, White

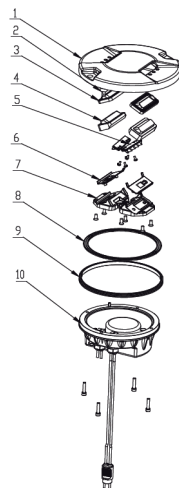


RCLS-08-LED, ICAO Fig. A2-7, Red

Application		Main beam		Color	Required min. avg. cd.	Actual avg. cd.
		H	V			
RCLS-08-LED	ICAO Fig A2-7	±5°	0° a 9° / 0,2° a 9°	White	5.000	7.184
				Red	750	1.598
	ICAO Fig A2-6	±5°	0° a 7°	White	5.000	7.381
				Red	750	1.567



Structure



- 1 Upper cover
- 6 Prism gasket
- 2 Thermal switch
- 7 Prism pressing bracket
- 3 Prism gasket sleeve
- 8 Light body gasket
- 4 Prism
- 9 Lighting fixture gasket
- 5 LED lamp assy
- 10 Inner cover assy

RCLS-08-LED | In-pavement LED runway centerline light - Airsafe

Spare Parts

N°	Order No.	Description
3	43117	Prism gasket sleeve
4	31158	Prism
5	932053-RCLS-C	LED lamp assy RCLS-C
	932053-RCLS-C	LED lamp assy ENDS-R
6	43316	Prism gasket
7	43241	Prism pressing bracket
8	41141	Light body gasket
9	41107	Light fixture gasket

Accessories

N°	Order No.	Description
1	SB-08	8" shallow base
2	SB-12	12" shallow base
3	DB-12	12" deep base
4	AR-12/08	12" - 8" adaptador ring
5	951101	8" lamp handle
6	ITF-065-066	65W isolation transformer
7	ITF-150-066	150W isolation transformer
8	REC7	Secondary cable receptacle style 7



Weight and Dimensions

	Base	8" shallow base
Packaging size	210x210x130mm ³	240x240x180mm ³
Weight	3,5 kg	6,5 kg